

ZIGEN

COMPLETE HD/IP
CONNECTIVITY SOLUTIONS

ZIG-POEWP-Rx70

HDMI Wall Plate Receiver
HDBase-T Receiver Over Single CAT5e/6/7
70m, IEEE POE Powered, 4K, IR, RS232



ZIG-POEWP-RX70 USER MANUAL

Important Safety Instructions

v

1. Do not use this product near water.
2. Do not block any ventilation openings. Install in accordance with the manufacturer's instructions.
3. Do not install or place this product near any heat sources such as radiators, heat registers, stoves, or other apparatus (including amplifiers) that produce heat.
4. Protect the power cord from being walked on or pinched particularly at plugs, convenience receptacles, and the point where they exit from the apparatus.
5. Only use attachments/accessories specified by the manufacturer.
6. To reduce the risk of electric shock and/or damage to this product, never handle or touch this unit or power cord if your hands are wet or damp. Do not expose this product to rain or moisture.
7. Unplug this apparatus during lightning storms or when unused for long periods of time.
8. Refer all servicing to qualified service personnel. Servicing is required when the apparatus has been damaged in any way, such as power-supply cord or plug is damaged, liquid has been spilled or objects have fallen into the apparatus, the apparatus has been exposed to rain or moisture, does not operate normally, or has been dropped.
9. Batteries that may be included with this product and/or accessories should never be exposed to open flame or excessive heat. Always dispose of used batteries according to the instructions.

Warranty Information

Powered Product Warranty

Zigen warrants its powered products against any defects in materials and workmanship for a period of three years from the date of invoice. Touchscreen displays carry a one year parts and labor warranty. If a malfunction occurs during the warranty period, Zigen will repair or replace a product to its original operating condition. A return authorization number must be obtained from Zigen before products are returned for service.

Non-Powered and Cable Products - Lifetime Limited Performance Warranty

Zigen warrants that its non-powered products and cable products will be free from defects in material and workmanship for as long as you or your customer owns the product. All Zigen non-powered products and cables are designed and engineered to meet and exceed performance specifications. If, at anytime, the product fails due to manufacturer defect, Zigen will repair or replace the product to ensure that it meets original performance specifications. Reduced performance due to normal wear and tear, or damages caused by misuse or negligence will not be covered. Zigen will test and evaluate all non-powered and cable products claimed defective. Products must be shipped to Zigen, prepaid along with proof of purchase only after obtaining a Return Merchandise Authorization (RMA) number from Zigen. This statement of policy is in lieu of any other policy expressed or implied and no representative or person is authorized to assume any other liability or adopt any other policy for Zigen without our written consent.

Return Policy

If you would like to return a Zigen product, it can be done within 30 days of purchase for a full refund, less shipping and handling. Zigen will not be responsible for shipping and handling of product returns. Returns will only be accepted of products with proof of purchase, products in the original packaging with zero to minimal use and a Return Merchandise Authorization RMA number provided by Zigen.

Contacting Zigen

Technical Support

Tel: (818) 654-5252

Fax: (818) 654-5355

8:00AM - 5:00PM (PST)

Email

info@zigencorp.com

Web

www.zigencorp.com

Mailing Address

Zigen Corp.
c/o Customer Service
16135 Wyandotte Street
Lake Balboa CA 91406
USA

HDMI Wall Plate Receiver

- IEEE POE – remote or source – can connect to IEEE POE device for power or can connect directly to a 5VDC source via 2-pin phoenix style connector on the back.
- Supports digital video formats up to Ultra HD 4K/2K, 60Hz, 4:2:0 pixel format
- Supports HDMI 1.2, 1.3 and 1.4 with 48-bit deep color
- Supports HDR
- Supports uncompressed PCM 2- Ch., 5.1, 7.1, Dolby Atmos, Dolby Digital, DTS, Dolby TrueHD, DTS HD-Master Audio and more.
- Supports IR, RS-232 commands
- Supports HDCP 1.4 & 2.2

Specifications

Inputs

HDBase-T Receiver Over Single CAT5e/6/7

Power – On back – 5VDC direct or IEEE POE from RX or switch

Outputs

HDMI, IR, RS-232

Distance between TX and RX

Full HDBaseT - 230' or 70M @ 4K/60 4:2:0 8-bit

Copy Protection Compliance

HDCP – Yes – 1.4 & 2.2

Video Bandwidth

10.2 Gbps

Video Timings: 480i, 480p, 720p, 1080i, 1080p, 1920x1200, 2K and 4K. 4K/2K, 30Hz 24bpp.
4K/2K, 60Hz, 24bpp with 4:2:0 pixel format

Audio

Up to Dolby TrueHD and DTS Master Audio

Wall Mountable

Yes – 2 gang Decora style

Packing List

The ZIG-POEWP-Rx70 is a 70 meter wall plate (230 feet) HDBaseT receiver. It can be powered with a 5 VDC supply or from a POE TX device that it is connected to like a ZIG-PS-82 or ZIG-POE-70Tx. It can be used stand-alone as an HDBaseT wall-plate receiver, but really shines when paired with the ZIG-PS-82, ZIG-PRO-88, ZIG-PRO-1616 Switcher/scaler. Ideally used with projectors where fire code mandates “Fire Proof” installations and where wall mounted displays have to be installed flush on wall. A must for conference rooms and huddle spaces.

The ZIG-POEWP-Rx70 is packaged with the following items:

- 1 x ZIG-POEWP-Rx70
- 1 x User Manual
- 1 x Phoenix type captive connector
- 1 x IR Receiver

If any of these products are not present upon first opening of the package, please contact Zigen or your reseller.

© 2015 Zigen, Corp. All Rights Reserved.

All trademarks are the property of their respective owners.

Zigen, Corp. reserves the right to make changes in the hardware, packaging and any accompanying documentation without prior written notice.

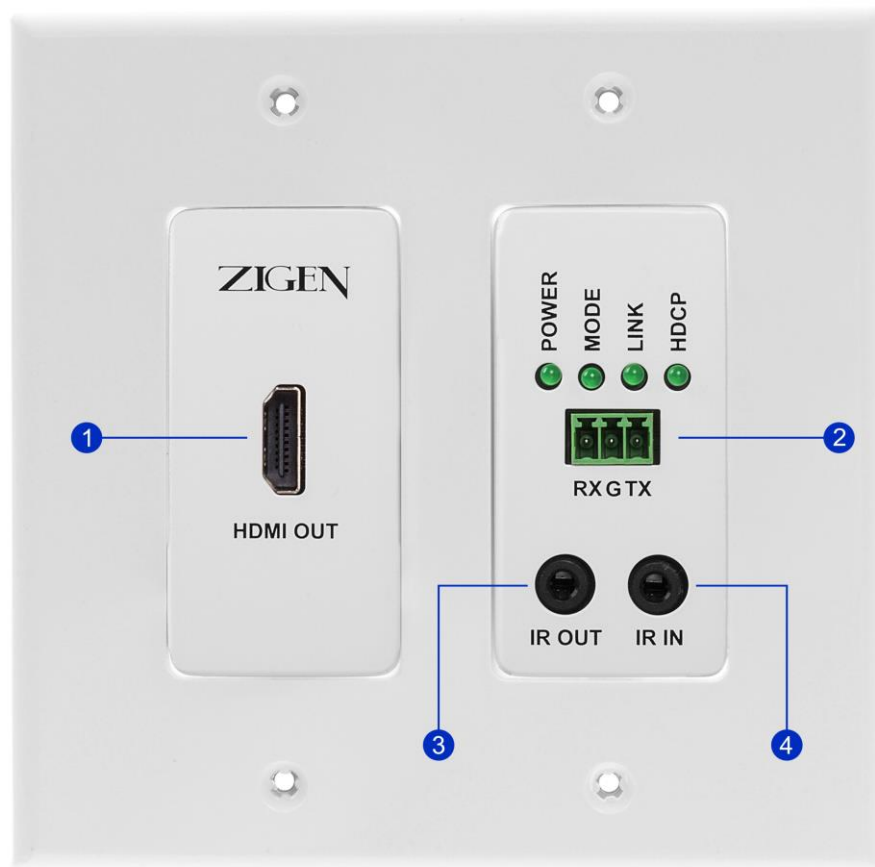
Table of Contents

Introduction

- Front Panel 9
- Back Panel 10
- Connection Example 11

Front Panel

1. HDMI Output – Connect HDMI cable to display, up to 4K UHD.
2. Connect RS-232 connect to phoenix connector
3. Connect IR Emitter
4. Connect provided IR Receiver

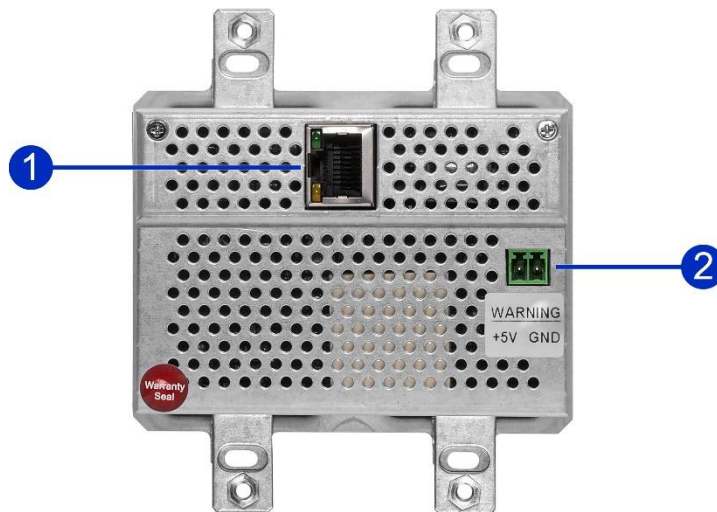


Back Panel

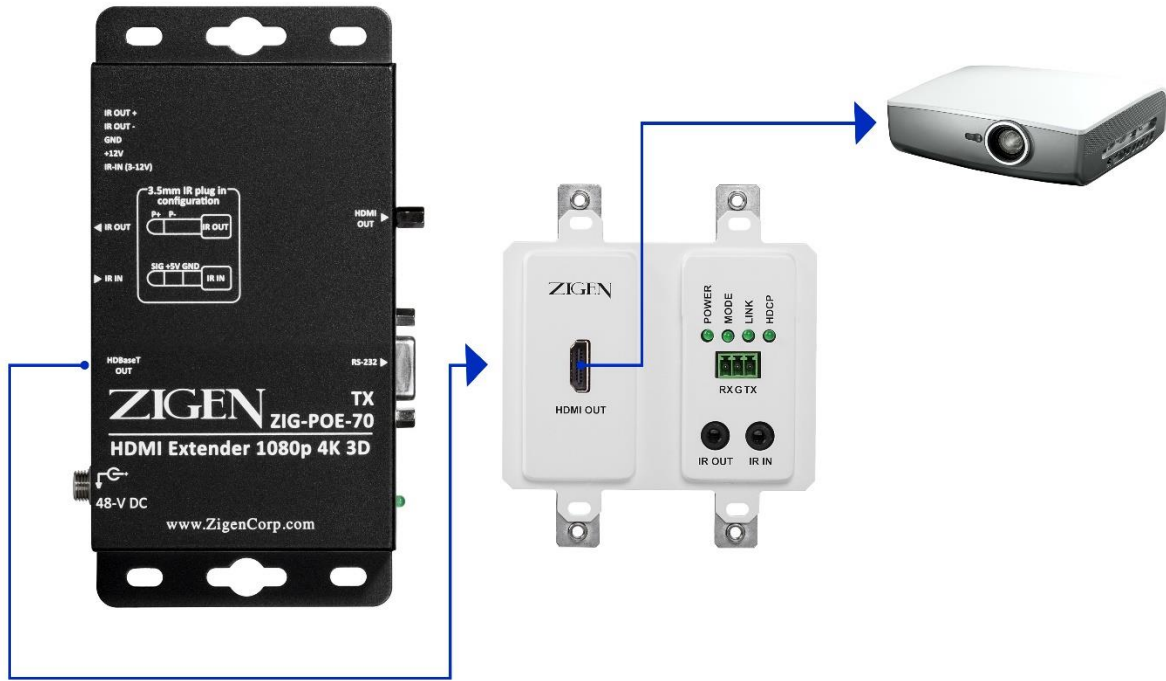
1. HDBaseT Receiver – Connect RJ45 up to 70 meters (230 feet) CAT5e, 6, 6a. This is the connection to an HDBaseT Transmitter such as the ZIG-POE-70Tx or ZIG-PS-82.
2. 5 VDC Power connection – if NOT using POE power, you can connect a 5VDC supply via phoenix style connectors.

Captive Screw Connector – pin outs are also located on the unit.
2-pin connector – for power

- Power – connect black wire to negative terminal (-)
- Power – connect white wire to positive terminal (+)



Connection Example



Example is showing our HDBaseT Transmitter ZIG-POE-70 connected to the ZIG-POEWP-Rx70 HDBaseT receiver wall Plate with IR and RS232 control.

1. Connect sources to ZIG-POE-70Tx – HDMI
2. Connect ZIG-POEWP-Rx70 to Display via HDMI
3. Connect your Source.
4. Turn on the Source and TV